

Hard Modding a Xbox

Steps:

Modchip Installation

BIOS Flashing

Creating & Booting to a Xbox Boot Disc

FTP into the Xbox

Installing a Larger Hard Drive

Installing EvolutionX

Copying Games to the Xbox HDD

Installing Apps

Modchip Installation

Locate and purchase a modchip on the web.

Suggested Modchips:

Xecuter or Xenium, also purchase a solderless adapter.

Sites:

<http://www.modchip.ca/store/home.php>

<http://www.xbox-modchips.com/>

<http://www.americanxboxmodchips.com/>

<http://www.divineo.com/cgi-bin/div-us/index.html>

The website will provide installation instructions on the web or with the chip itself upon delivery. With a solderless adapter, installation only takes a few minutes.



BIOS Flashing

Your modchip will need to be flashed with a BIOS capable of running unsigned code.

Suggested BIOS:

EvolutionX or Xecuter, get the latest version

Site:

<http://www.xbox360-tribe.org/>

The modchip will either expect a flash disc or come with an external device to flash the onboard chip. Instructions will be provided by the site usually. [Here is a tutorial on creating a flash disc.](#)



Creating & Booting to a Xbox Boot Disc

A boot disc is required to boot the Xbox to an alternate dashboard allowing FTP access so that we can access the HDD.

Required Software/Programs:

- [xISO version 1.15](#) - used to create Xbox image files.

- [EvolutionX Dashboard](#) - needed to ftp into Xbox and take advantage of the modchip.

- [ImgBurn](#) - use to burn the xISO .iso image file to a CD-RW.

The EvolutionX Dashboard consists of the following files:

default.xbe – Dashboard Executable

evox.ini – Dashboard Configuration File

Skins – Contains various skins to use with the Dashboard

Network Setup:

2 Options:

1. If you are going to use a router, you do not need to assign a static IP in the evox.ini or change any settings on your PC.
2. If you are going to use a crossover cable and connect your PC directly to your Xbox, you will need to assign a static IP in the evox.ini file and set your PC NIC settings to match.

Edit the evox.ini file and set the network setting to your connection type before creating the Boot Disc. The settings are under the Heading [Network]. Below would be used for a direct connection using a crossover cable (recommended). The EvolutionX download on this site contains an evox.ini file configured for a direct connection.

[Network]

SetupNetwork = Yes
StaticIP = Yes
Ip = 192.168.0.3
Subnetmask = 255.255.255.0
Defaultgateway = 192.168.0.1
DNS1 = 0.0.0.0
DNS2 = 0.0.0.0
SetupDelay = 0
SkipIfNoLink = No

Once you have the network setup, use xISO to create a boot disc image containing the EvolutionX files listed above.

Launch xISO.

Go to Tools Menu > Make a xISO.

Browse and select the folder containing the EvolutionX files.

Save the file.

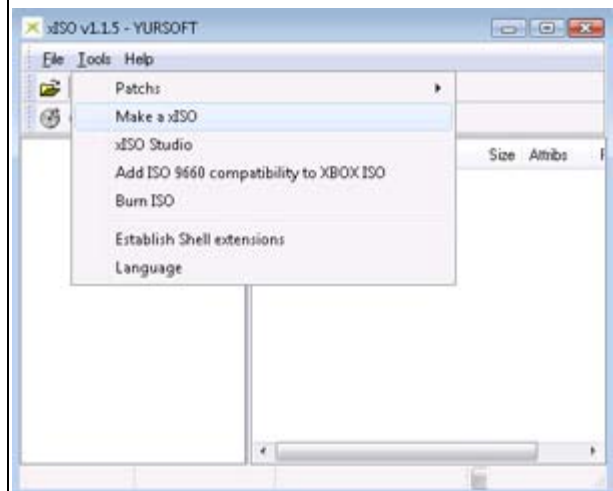
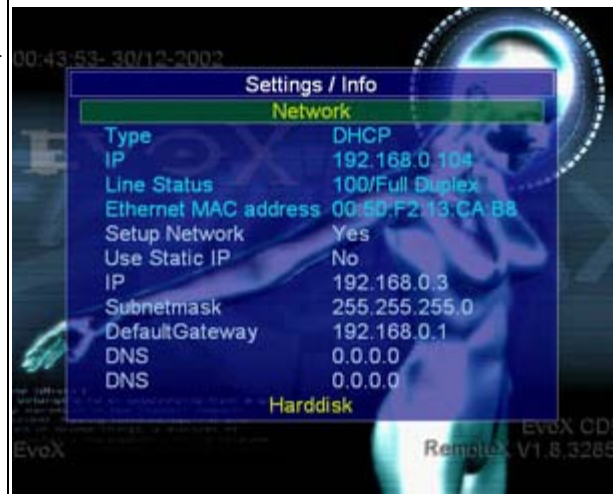
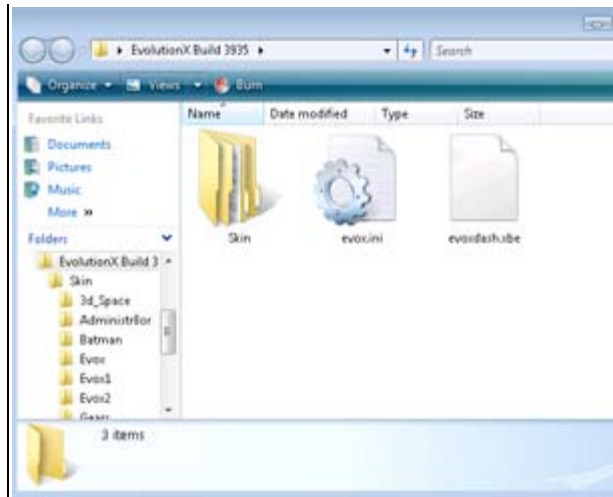
A status box will appear, providing the progress of the image.

Use ImgBurn to burn the image to a CD-R or CD-RW.

Suggested Media:

Imation CD-R

Place the Xbox Boot Disc in the Xbox and do a complete power cycle. The Xbox should load up to the EvolutionX dashboard instead of the Microsoft dashboard. NOTE: If your Xbox does not boot to the disc, it may be that you do not have a drive capable of



booting to CD-R\RW media. Find a buddy with a Xbox and try swapping out the dvd-rom drives until you get one that works. Some drives will boot to CD-R/RW media while others will not. Do a search on the web, you can get a list of good drives.

FTP into the Xbox

Use a FTP program such as FlashFXP to FTP into the Xbox. Connect your Xbox to your PC. Change your NIC settings to, if connecting directly:

IP: 192.168.0.3

Subnet: 255.255.255.0

Gateway: 192.168.0.1

Boot the Xbox to the Boot Disc we created with your specific network setting in the evox.ini file. Launch FlashFXP, enter the Xbox's IP address (192.168.10.3 if using my evox.ini file and a crossover cable) and use the following username and password:

Username: xbox

Password: xbox

Click connect.

You will see the following folders on the Xbox:

C: Main folder containing the dashboard and other system files.

D: DVD-ROM drive, you should see the contents of the Xbox Boot Disc you created.

E: Game Saves

X: Cache

Y: Cache

Z: Cache

F & G partitions will be present on larger, modified drives.

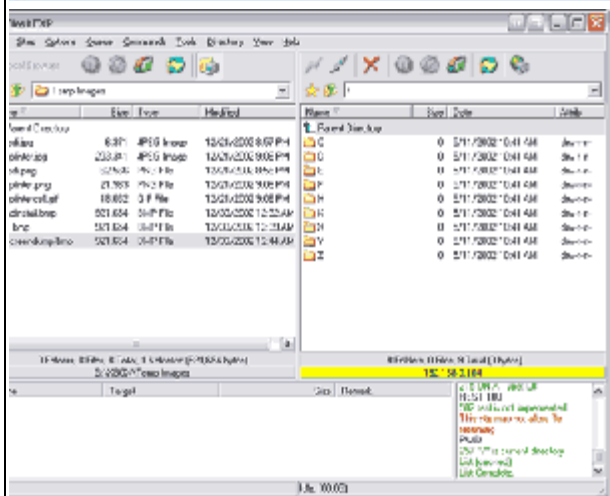
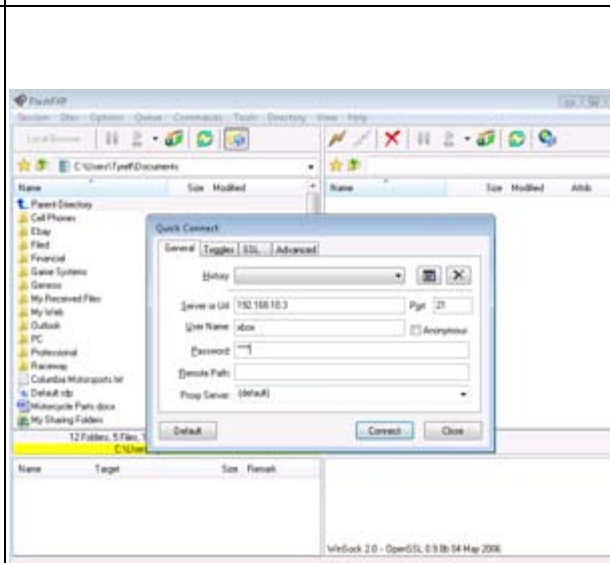
Make a complete backup of the C and E directories before proceeding.

Installing a Larger Hard Drive

This is a good time to install a larger hard drive. Open the xbox and swap out the old HDD with the new one. Boot to the Xbox Boot Disc and select the Format HDD option under System Utils. If you have a HDD smaller than 137GB, use the F Present option only. If you have a HDD larger than 137GB, use the F & G Present Option. The F & G represent additional directories for the additional space since the original Xbox HDD is only around 8GB. Once the drive is formatted, you can install EvolutionX.

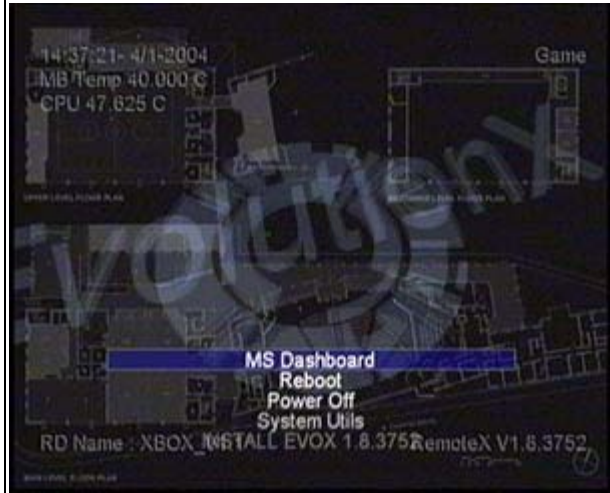
Installing EvolutionX

Go into the C directory on the Xbox. Copy



the EvolutionX files from your PC or from the D directory on the Xbox into the C directory. The Xbox will attempt to boot to 1st a default.xbe in the DVD-ROM drive, then, if not present, it will search the C directory for xboxdash.xbe (the xbox dashboard). Rename the xboxdash.xbe to msdash.xbe and the evoxdash.xbe to xboxdash.xbe. Now reboot your Xbox and it should boot to the EvolutionX dash without the boot disc.

It's a good idea to 'lock' your HDD. If your HDD is not locked you will not be able to boot your Xbox with the modchip disabled (so you can't go on Xbox LIVE). Some HDD brands/models can not be locked, so the only thing you can do it try to lock it and see if it works. (if it fails, your HDD will not be broken, so there is no risk). The Lock/Unlock options are under System Utils.



Copying Games to the Xbox

EvolutionX will automatically search for games under E:\games\, F:\games\ and G:\games\. From EvolutionX, use FlashFXP to create a games directory in E, F or G, depending on the size of your HDD. Inside games, create a directory and name it whatever game you are about to copy. Place the game in the drive and copy all the contents of D: to the directory you just created. Restart the Xbox and the Game will show up under the Launch Menu > Games option.

Installing Apps

Apps are installed much like games. EvolutionX will automatically search for apps under E:\apps\, F:\apps\ and G:\apps\. Use FlashFXP to create an apps directory in E, F or G depending on the size of your HDD. Copy the app from your PC to this directory. Note: EvolutionX searches for a default.xbe file.